

SUSTAINABILITY

SCAVENGER HUNT

The production and consumption of paperboard has a minimal environmental impact and promotes a sustainable world!

Unlike many of the resources we extract from the earth, paperboard is inherently **renewable and recyclable**. We can't grow new gold to replace what we've mined or extract additional oil once we've exhausted a well. However, we can make paper from tree farms and recycle paperboard packaging to create a virtually endless supply of new paperboard products!

In this Sustainability Scavenger Hunt, we provide you with key terms to teach your learner about the world of sustainability. Children will have the opportunity to search for a variety of household items to help reinforce their understanding of the vocabulary terms introduced in this activity guide.

Together, we can all make thoughtful choices about the products we consume in order to support people and the planet, promoting a healthy world for all of us to live in. Show us your journey by using the hashtag **#TICCIT** on social media.

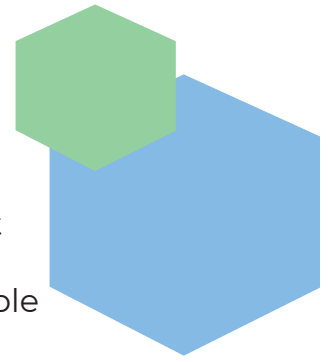


STEP ONE:

LET'S LEARN

SUSTAINABLE

Sustainable practices, as defined by the United Nations, are those that **“meet present needs without compromising the ability of future generations to meet their [own] needs.”** Since paperboard is renewable and recyclable, when we produce paperboard packaging or purchase products packaged in paperboard, we are participating in sustainable practices that will not negatively impact future generations' potential to prosper. Indeed, when we choose paperboard, we do more than simply meet our own needs; we take a step forward in creating a beautiful, sustainable world that our children and grandchildren will be grateful to inherit.



RENEWABLE

Did you know that the trees used to make paper are crops, just like apples or corn? This may sound strange because many of us are familiar with the myth that forests are destroyed when we use paper.

But here are the facts: virtually all paperboard consumed in the United States today originates from certified tree farms where trees are planted, harvested, and replanted specifically for packaging, paper, and other products.

Trees are a renewable resource because they are replaced naturally. Paper production actually **increases** the number of trees on our planet; for every tree harvested from a managed tree farm, five more are planted, adding **1.7 MILLION TREES** every day!

Paper and paperboard are some of the most sustainable materials in the world because they are made from renewable resources- trees!



RECYCLABLE

When we throw something away, it does not magically cease to exist because we can no longer see it; for decades, this “out of sight, out of mind” mentality has sent tons of potentially reusable materials to landfills. But as we have become more aware of our impact on the environment, recycling programs throughout the United States and Canada have diverted paper from landfills.

In fact, today 96% of the U.S. population has access to curbside or drop-off paper recycling programs, and paper-based packaging accounts for 71.3% of the nearly 27 million tons of packaging materials recovered or recycled. **Paperboard is simply the easiest recyclable packaging material in the marketplace.** While paperboard is naturally recyclable, there are seven major grades of plastic, some of which are difficult to recycle.

Recycling is the process of taking a product and breaking it down to use it again. Most recyclable products are reprocessed into the same product, but other can even be made into something else!

BIODEGRADABLE

When a material is biodegradable, that means it can break down (decompose) into harmless substances naturally in any environment.

if you were to drop a paperboard box in the forest, it would only take a few months to turn back into fibers and become part of the surrounding ecosystem. **Now that's biodegradable!** Check out our pulp-making activity to learn more about wood fibers.

Some biodegradable materials are compostable. When compostable materials break down, they add important nutrients to soil that help trees and plants grow! Think of food scraps and flowers being turned into food for the earth.

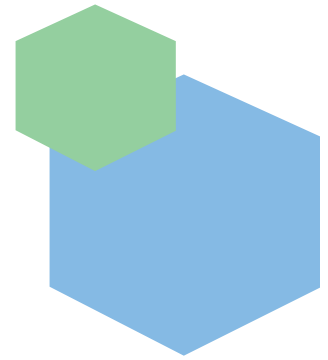
WASTE

Waste is an item that cannot break down or be recycled. A landfill is where waste is kept. Waste or garbage that is thrown away and not recycled, reused or set aside as compost is crushed into very small pieces and buried in the ground to be kept away from groundwater and air. The process often creates a bad smell and looks unattractive.



STEP TWO: COLLECT

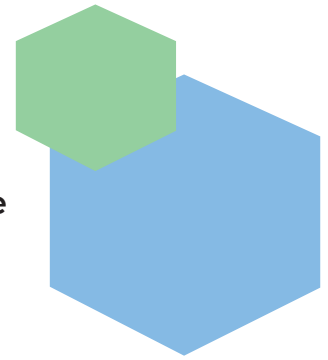
Collect as many of the following items that you can and use the checklist to identify what items are recyclable, waste, or can break down (decompose) naturally. Keep in mind that some items will fall into more than one category!



Item	Recyclable	Waste		Will this item naturally decompose?
FROM YOUR KITCHEN				
Paper Bag				
Plastic Bag				
Plastic Bottle				
Paper Plate				
Coffee Grounds or Tea Bag				
Egg Shells				
Toothpick				
Cupcake Liner				
Cereal or Pasta Box				
Glass Jar				
Styrofoam Plate or Container				
Napkin				
Aluminum Foil				
Apple Core				
Aluminum Can				
FROM YOUR BATHROOM				
Toilet Paper Roll				
Tissue Box				
Cotton Ball/Swab				
Lint				
FROM YOUR BEDROOM				
Cotton Shirt				
Pencil Shavings				
Electronic Charger				
FROM YOUR BACKYARD				
Rock				
Leaf				
Flower				
Tree Bark/Branch				

STEP THREE: **TALK ABOUT IT**

Talk about your results. Recycling is a way to reduce the amount of garbage that is thrown away. When we recycle something, we reuse all or part of a thing we threw away to make something new! When something is decomposable, it can be broken down into the earth. Waste ends up in a landfill.



Item	Recyclable	Waste		Will this item naturally decompose?
FROM YOUR KITCHEN				
Paper Bag	X			YES
Plastic Bag		X		NO
Plastic Bottle	X			NO
Paper Plate	X			YES
Coffee Grounds or Tea Bag		X		YES
Egg Shells		X		YES
Toothpick	X			YES
Cupcake Liner		X		YES
Cereal or Pasta Box	X			YES
Glass Jar	X			NO
Styrofoam Plate or Container		X		YES
Napkin	X			YES
Aluminum Foil		X		NO
Apple Core		X		YES
Aluminum Can	X			NO
FROM YOUR BATHROOM				
Toilet Paper Roll	X			YES
Tissue Box	X			YES
Cotton Ball/Swab		X		YES
Lint		X		YES
FROM YOUR BEDROOM				
Cotton Shirt		X		YES
Pencil Shavings	X			YES
Electronic Charger		X		NO
FROM YOUR BACKYARD				
Rock				YES
Leaf				YES
Flower				YES
Tree Bark/Branch				YES